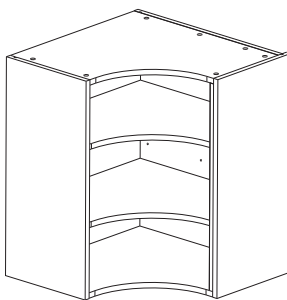
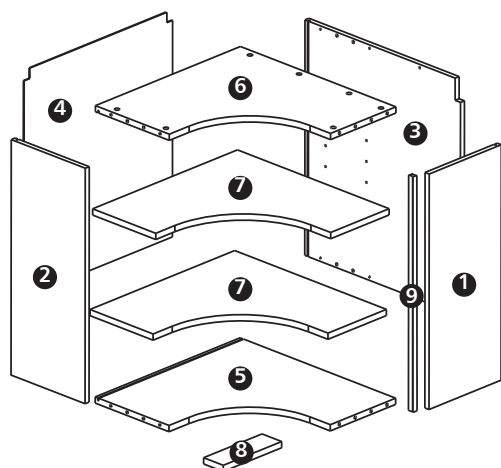


ASSEMBLY GUIDE



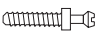






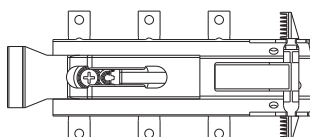
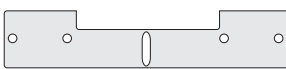

Standard & Tall 625mm CURVED CORNER WALL Cabinet

Panels



- 1 x **1** RH Side
- 1 x **2** LH Side
- 1 x **3** Back Large
- 1 x **4** Back
- 1 x **5** Base
- 1 x **6** Top
- 2 x **7** Shelf for Standard 3 x **7** for Tall
- 1 x **8** Rail
- 1 x **9** Door Post

Hardware

- 12 x **B**  for Standard Cabinet
- 18 x **B**  for Tall Cabinet
- 3 x **BC**  20mm
- 2 x **D**  
- 22 x **F**  for Standard Cabinet
- 34 x **F**  for Tall Cabinet
- 3 x **P** 
- 3 x **AA** 
- 3 x **BB** 

Hinges Supplied Separately

Please use scissors to open the bag of fittings and then empty the contents into a bowl, so that they do not get lost!

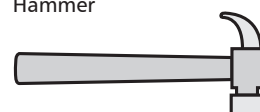


Minimum Tools required

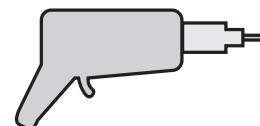
Cross Head Screwdriver



Hammer



Drill



Level



Before you Start ...

WARNING: Installation should be performed by a competent person only. This product could be dangerous if incorrectly installed. All assembly fittings except legs and shelf pegs have been pre-inserted. If any are missing or there is a problem with the panels, please call the Manufacturers' Helpline on **01769 575500**, and their team will get things sorted.

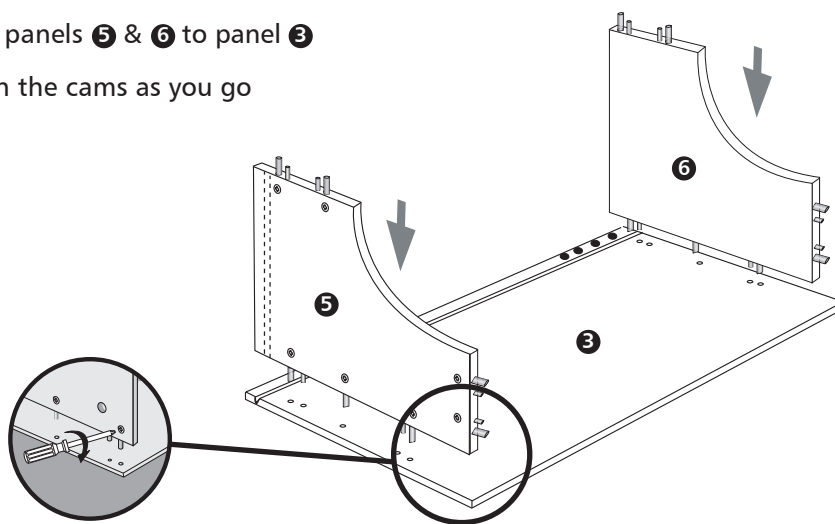
 Video assembly guides can be viewed at **www.mycabinetguide.co.uk**

Cleaning – Use mild soap and water only. Do not use abrasive cleaners.

1

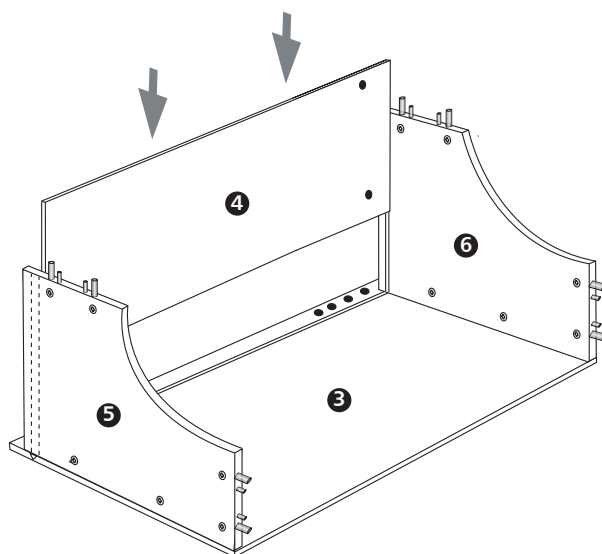
Attach panels **5** & **6** to panel **3**

Tighten the cams as you go



2

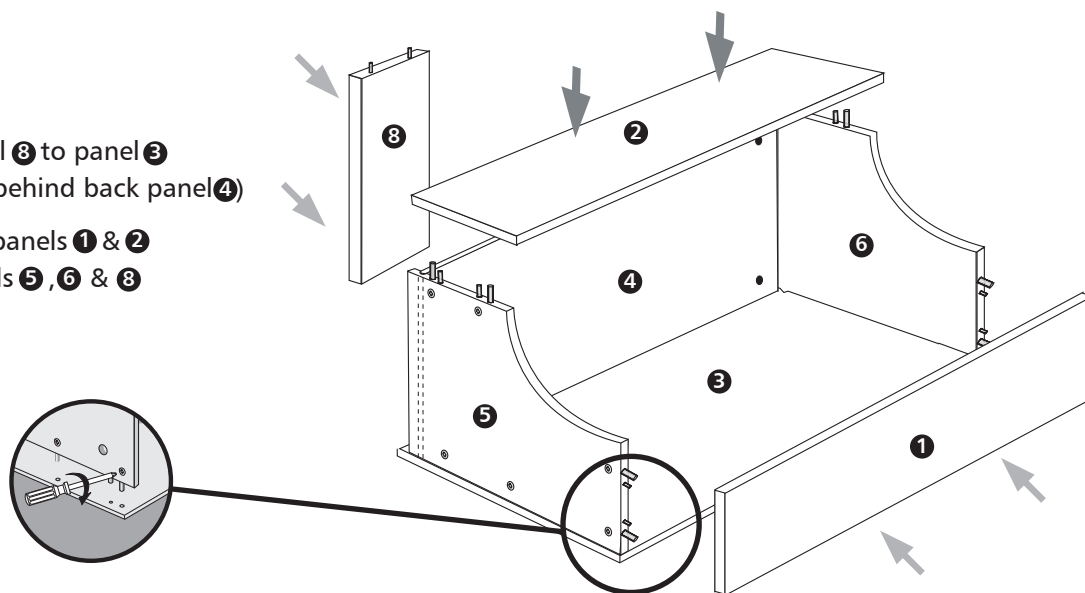
Slide panel **4** into grooves



3

Fit panel **8** to panel **3**
(This is behind back panel **4**)

Attach panels **1** & **2**
to panels **5**, **6** & **8**



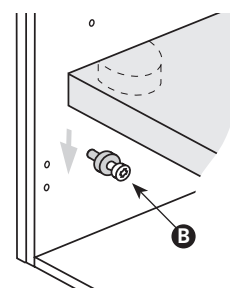
4

Fully insert the shelf pegs **B**, at required position, (the back of the plastic collar must finish flush with the face of the side panel).

Rest the shelf on the pegs, and line up with the plastic inserts.

Now tap down firmly to secure.

NOTE: To remove the shelf, gently tap up and take out, push shelf peg in turn anticlockwise with a screwdriver and pull out.



5 Fitting to wall

Stage 1:

Hold Wall plate **AA** between hands and snap at centre to produce one left hand and one right hand wall plate

Stage 2:

Position and secure wall plates **AA** to the wall with suitable fixings.

WARNING: This unit could be dangerous if fitted incorrectly to wall. (Fixings are not supplied with the pack, as they vary according to the type of walls you have. If you are unsure, ask an expert).

Stage 3:

Position wall hanging brackets **P** into the large holes at the top of the LH & RH end panels **1** & **2**, and the large back panel **3**, and ensure they are fully inserted.

Stage 4:

Pull the bottom flap down to lock the hanging brackets. Finally, they must be secured into place at the bottom, using 1 x **BC** to each bracket, as shown.

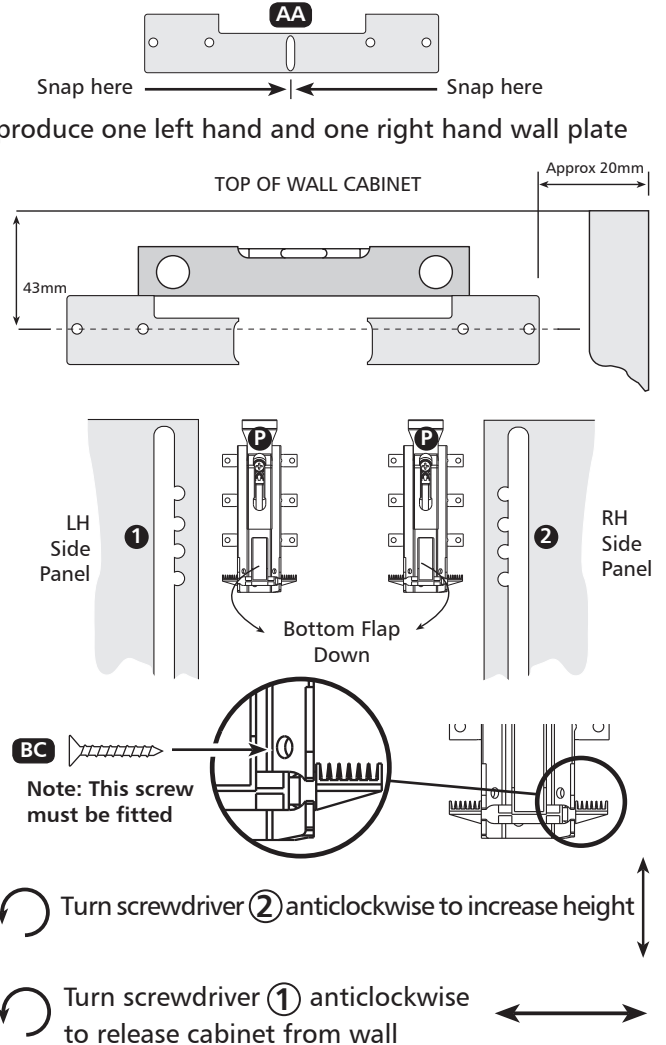
Stage 5:

To adjust the height of the Wall Hanging Brackets **P**.

Turn screwdriver **2** clockwise to reduce height

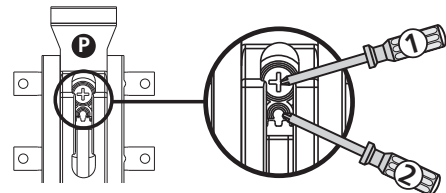
Stage 6:

Turn screwdriver **1** clockwise to pull cabinet towards wall.



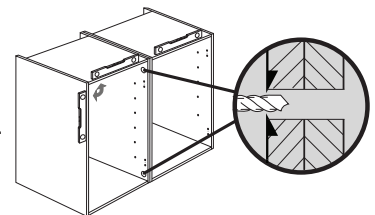
Stage 7:

When correctly positioned, push in cover caps **BB**



6 Joining of Cabinets

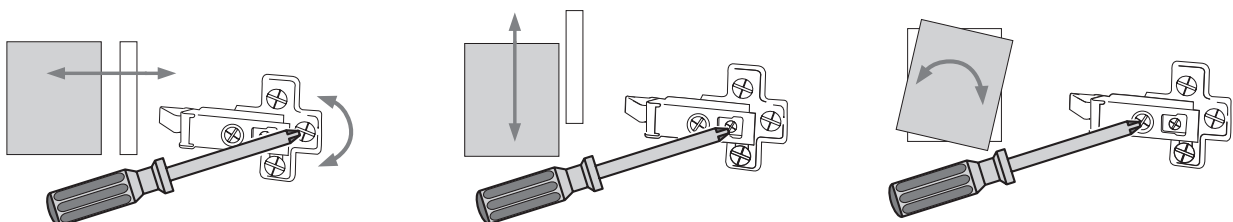
Drill a 5mm hole through both side panels. Join together using joining bolts **D**.



7 Door Hinges

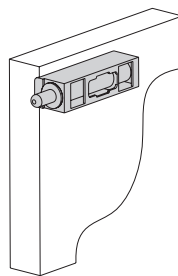
Hinge and Door Packs Supplied Separately

Turn screws as shown to adjust door position



10 Soft Closer

If you have been supplied with a soft close buffer, this should be fitted to the side panel, opposite to the hinges, using 2 x screw supplied



11 Handles

Position as required.

NOTE: care should be taken when drilling for the handle so as not to drill in to the shelf.

12 Door Post

Due to the nature of the curved door, a gap is visible between the closing side of the door, and the inside edge of the unit. It is therefore recommended that the Door Post 9 is fitted.

Drill 3 x 5mm holes, 7.5mm in from the front edge, completely through the closing side side panel, one 40mm down from the top edge, one 40mm up from the bottom edge, and one in the middle. These holes should then be countersunk, to approximately 2mm.

Now fix the Door Post 9 to the front inside edge of the side panel, using 3 x screw K.

