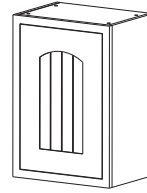
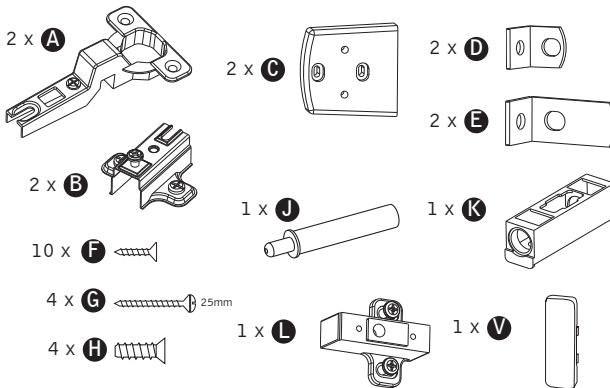


# ASSEMBLY GUIDE



## STANDARD DOOR & FRAME FIXING

### Hardware

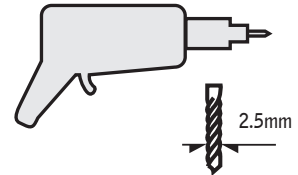


### Tools

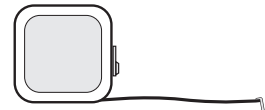
Cross Head Screwdriver



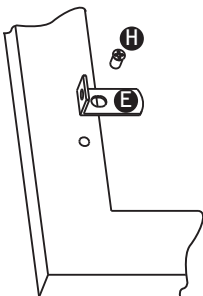
Drill & Drill Bit



Tape Measure



## 1 Frame fitting (fixings supplied in hinge packs)



Fix 2 x frame bracket **D** to the hinge side of the frame, using 2 x screw **H**, into the pre-drilled holes. Then, fix 2 x frame bracket **E** to the other side of the frame, using 2 x screw **H**, into the pre-drilled holes.

Now carefully push the frame onto the front of the cabinet, and adjust to the correct position, before finally securing the frame in place using 4 x screws **F**.

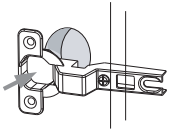
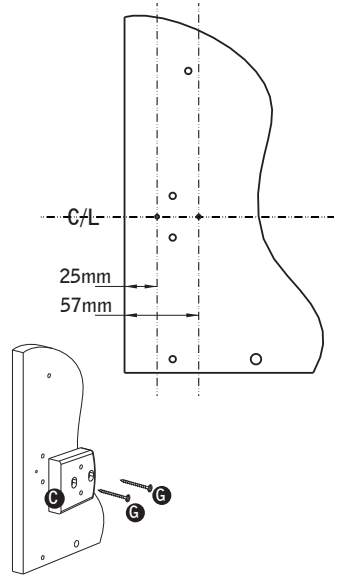
## 2 Hinge fixing for standard doors

Firstly, you will need to fix the hinge spacer blocks **C**, over the existing hinge holes, as appropriate. Measure and then draw a line at the centre point between the existing hinge plate holes, as shown. Then mark additional positions at 25mm and 57mm, as shown, and then pilot drill these to approximately 10mm, with a 2.5mm drill bit. Take care not to drill through the panel.

Now, using these holes, secure the spacer block into place with the flat edge towards the door frame, as shown, using screws **G**.

You are now ready to fix the hinge plates.

Separate hinge from hinge plate if supplied attached.

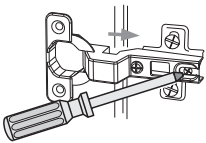


Insert door hinge **A** into recess in door and affix using 2 x **F** screws.

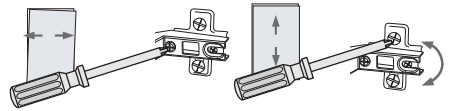
Edge of panel



Affix hinge plate **B** to cabinet using pre-drilled holes with pre-mounted screws.



Connect door hinge to cabinet and tighten screw shown.



Turn screw as shown, to adjust the door position

## 3 Door buffer fixing

Fit the soft close mounting block **L** into the pre-drilled upper hinge holes of the end panel, in the opposite side of the cabinet to the hinges, securing in place with the pre-fitted screws. Note that the longer section of block **L** should be towards the front of the cabinet.

Now, attach the door buffer carrier **K** to the mounting block **L**, using 2 x screws **F**, so that the small lip on the carrier **K** is towards the front.

Insert the buffer piston **J** into the carrier **K**, and finally fit the cover plate **V** to the top of the carrier, to complete.

