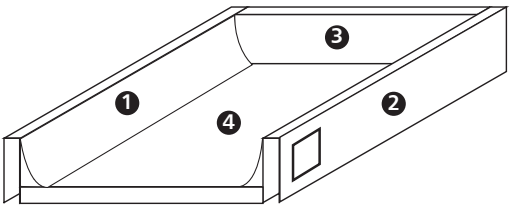
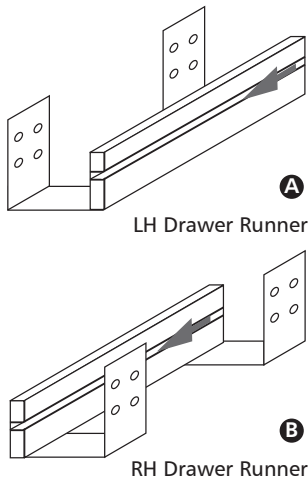

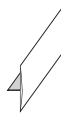
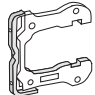

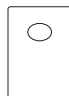

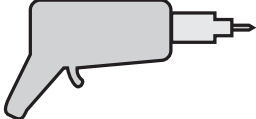




ASSEMBLY GUIDE

TOP DRAWERS

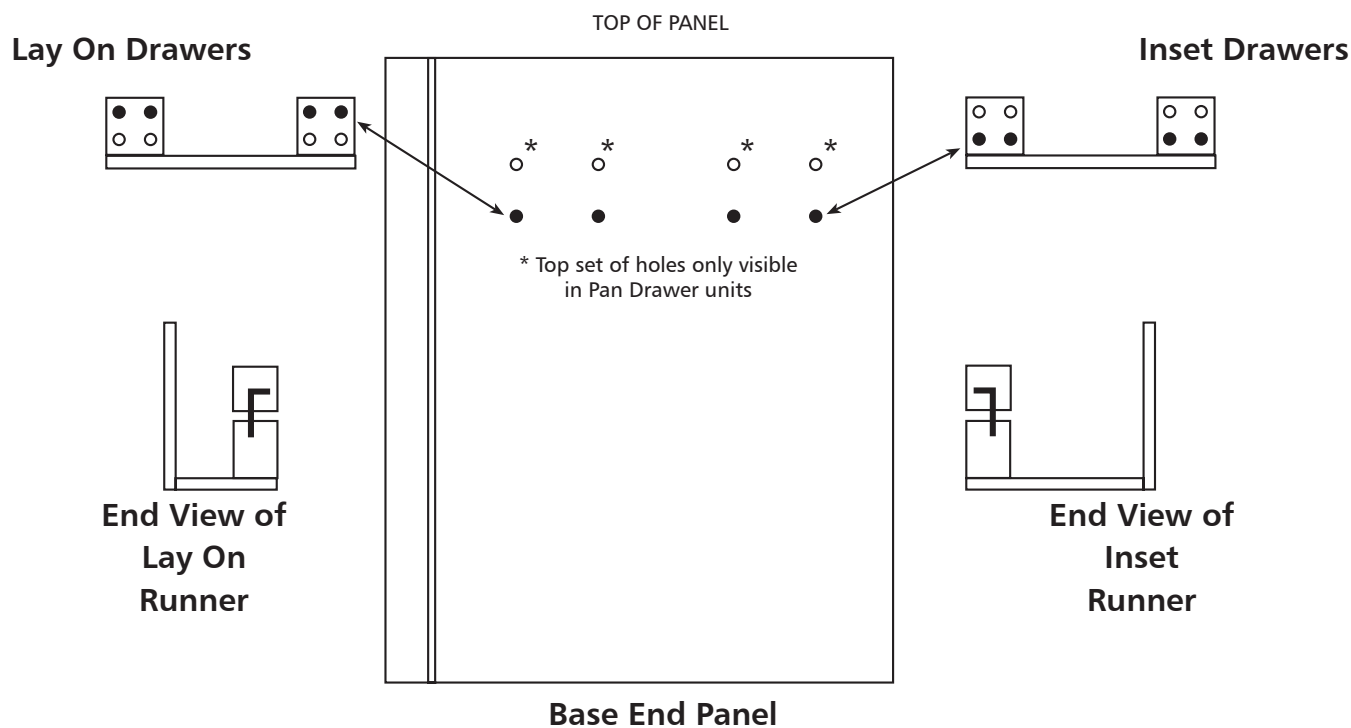
Drawer Box	Hardware	Minimum Tools required
 <ul style="list-style-type: none"> 1 LH Drawer Side 2 RH Drawer Side 3 Drawer Back 4 Drawer Base <p>Note: These items are Pre-Assembled</p>	 <ul style="list-style-type: none"> 8 x C Euro Screws  2 x D Cover Plate  2 x E Drawer Front Clip  4 x F 15mm  2 x G Drawer Stop (required for inset drawers only)  	<p>Cross Head Screwdriver</p>  <p>Drill</p>  <ul style="list-style-type: none"> 3mm Drill Bit  5mm Drill Bit 

Before you Start ...

WARNING: Installation should be performed by a competent person only. This product could be dangerous if incorrectly installed. If any items are missing, or problems arise with fitting, please call the **Helpline on 01769 575500** and our team will get things sorted.

Cleaning – Use mild soap and water only. Do not use abrasive cleaners.

Positioning / Fitting of Drawer Runners



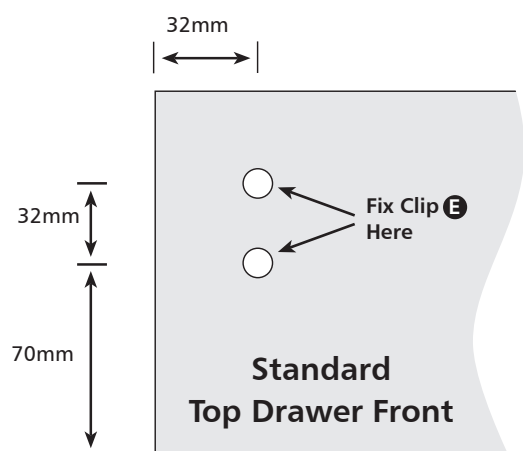
Important: Check that you have the correct runner style for your cabinet (i.e. 'Lay On' or 'Inset')

Assembly:

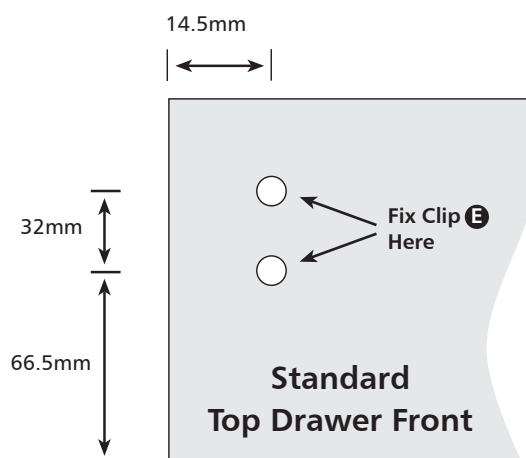
1. Before fitting drawer runners to base end panels, check that you have a 'pair' of runners for right and left hand operation. Pull top metal runner fully towards you to establish 'handing'.
2. Refer to illustration above to match correct runner bracket holes to base end panel holes (RH panel shown), then fix runner with 4 x Euro screws **C** - Repeat for LH end.

Positioning / Fitting of Drawer Fronts

Lay on Drawers

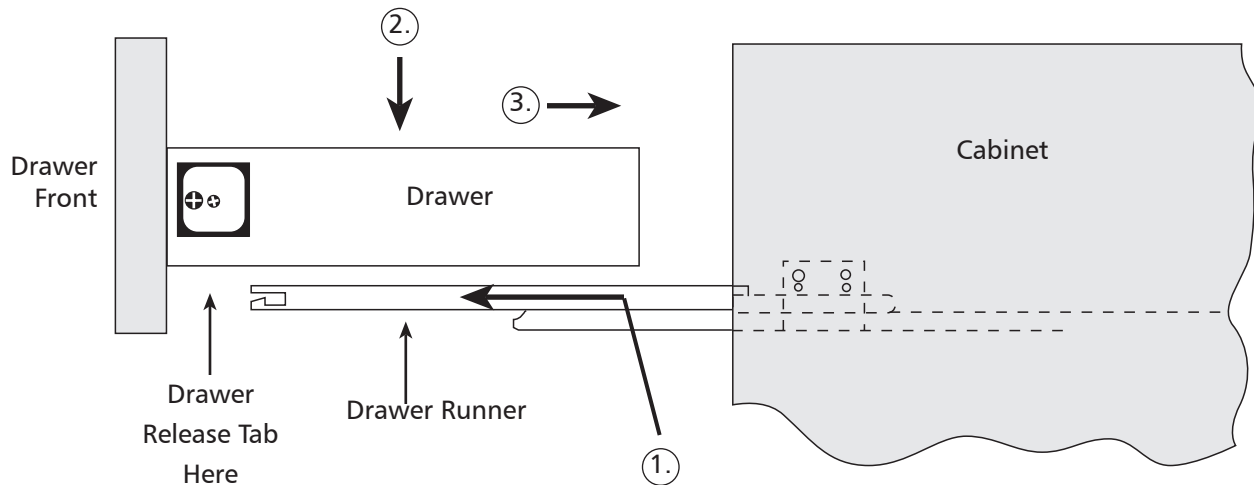


Inset Drawers



- a. Identify drawer front clip **E** (2 per drawer front)
- b. Hold plastic clip in one hand, and with other hand 'unlock' metal part of clip by swivelling through 90°
- c. Secure metal clip **E** to back of drawer front with 2 x **F** screws. Reposition plastic portion of clip by swivelling it back through 90°
 - * Repeat this procedure for fixing other clip.
- d. Present drawer front with its clips facing towards front of drawer sides, and insert both plastic clips into drawer sides - pushing carefully until fully located.

Positioning / Fitting of Completed Drawer



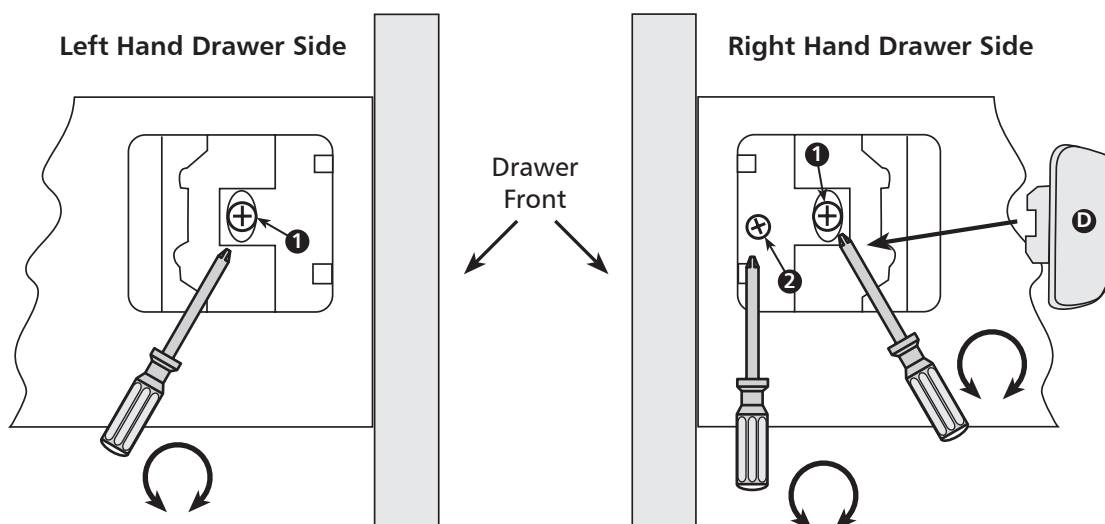
To Fit Drawer

1. Extend drawer runners fully out and place completed drawer onto runners.
2. Carefully push down on the drawer, to ensure correct location.
3. Now carefully push drawer in until you hear it 'click' into position

To Remove Drawer

Pull drawer out until it stops. Press both drawer release tabs up and carefully pull the drawer further out to release it from the runners. You can now lift the drawer off the runners.

Final Adjustment of Drawer Front



For **Vertical** adjustment, loosen screws 1 adjust Drawer front to desired position, re-tighten screws 1.

For **Horizontal** adjustment, turn screw 2 clockwise or anticlockwise for required positioning.

To complete unit, lock Drawer front to Drawer sides by inserting 2 x D cover plates into adjustment screw recesses.

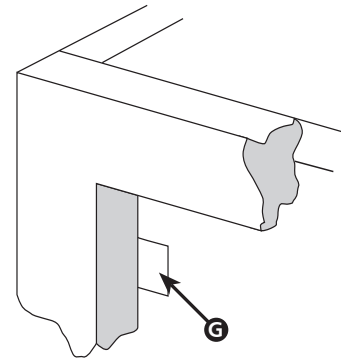
For Inset Drawers only.



2 x **G**

Drawer Stop
(required for
inset drawers
only)

Fit drawerstop **G** to inside of the LH and RH sides of frame to achieve correct position of drawer front when closed.



Notes