

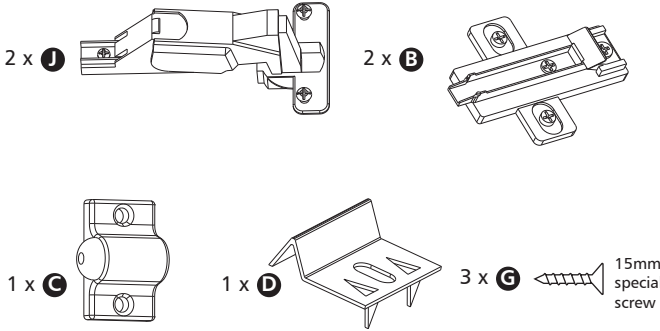
OVERLAP STYLE DOORS

DIAGONAL FRAMED DOOR FIXING

ASSEMBLY GUIDE

Hardware

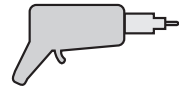
Minimum Tools required



Cross Head Screwdriver



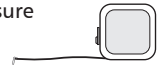
Drill



Hammer



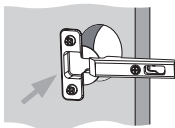
Tape Measure



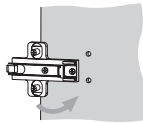
1 DOOR HINGES

For this door type, you will first need to remove the panel **10**, from the hinge side, and then fit the hinge plate **B** onto the diagonal upright, panel **9**.

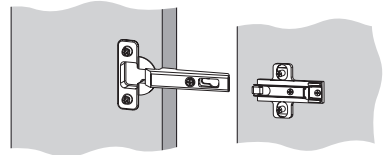
Insert Door Hinge into rear recess in door



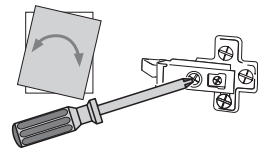
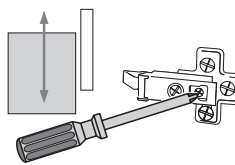
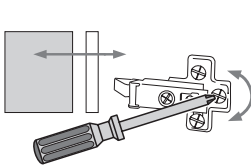
Affix Hinge Plate on cabinet



Now, Clip Hinge onto Hinge Plate



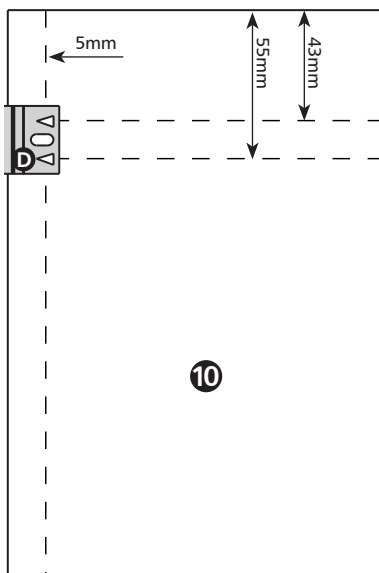
Turn screws as shown to adjust door position



2 FITTING OF STRIKE PLATE

Strike plate **D** should be fitted to panel **10**. Measure up or down from the base panel and draw two horizontal lines, one at 43mm, and one at 55mm.

Then draw a vertical line, 5mm in from the front edge of panel **10**, through the two horizontal lines, and then, using a 2mm drill bit, carefully drill the two intersect points to a depth of approximately 5mm. Position the spikes in the back face of strike plate **D** in these holes, with the main section of the plate facing the front of the unit, and gently hammer into place. Now carefully drill a hole into panel **10**, through the centre hole of plate **D**, at least 10mm deep, using a 2mm drill bit, making sure not to drill right through, and securely fix the plate into position with 1 x screw **G**.



2 FITTING OF DOOR CATCH

On the back of the second door, (opposite side to the hinges), mark two fixing positions, 39mm in from the edge of the door, and 53mm and 75mm up or down from the bottom of the door. Carefully pilot drill these positions, using a 2mm drill bit, to a depth of approximately 10mm, making sure not to drill through the door, and then fix the catch **C** to these holes using 2 x screw **G**, ensuring that the ball of the catch is towards the near edge of the door.

